

Community Information Day

Proposed EfW Facility, Old Kiln Quarry, Chieveley

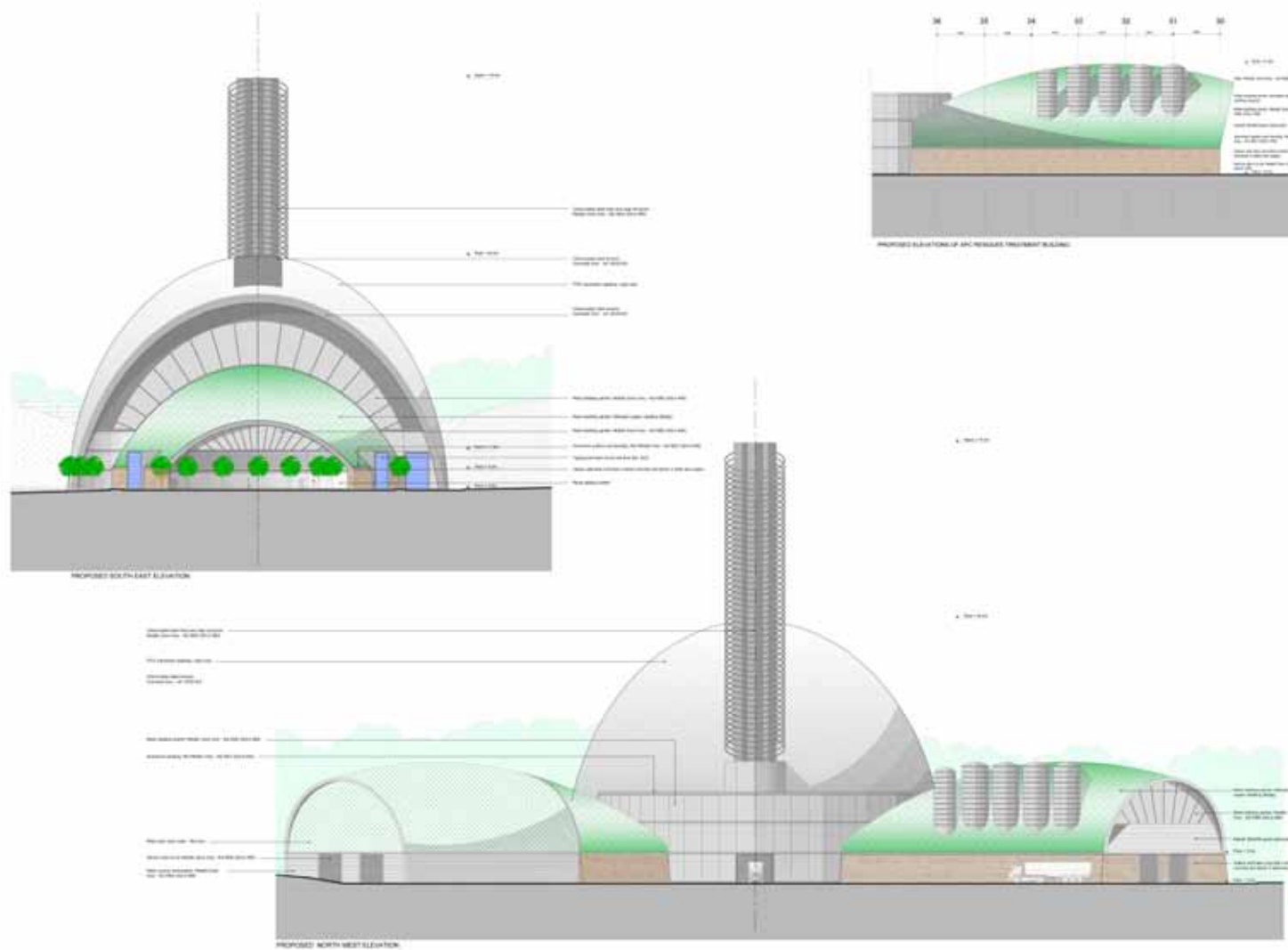
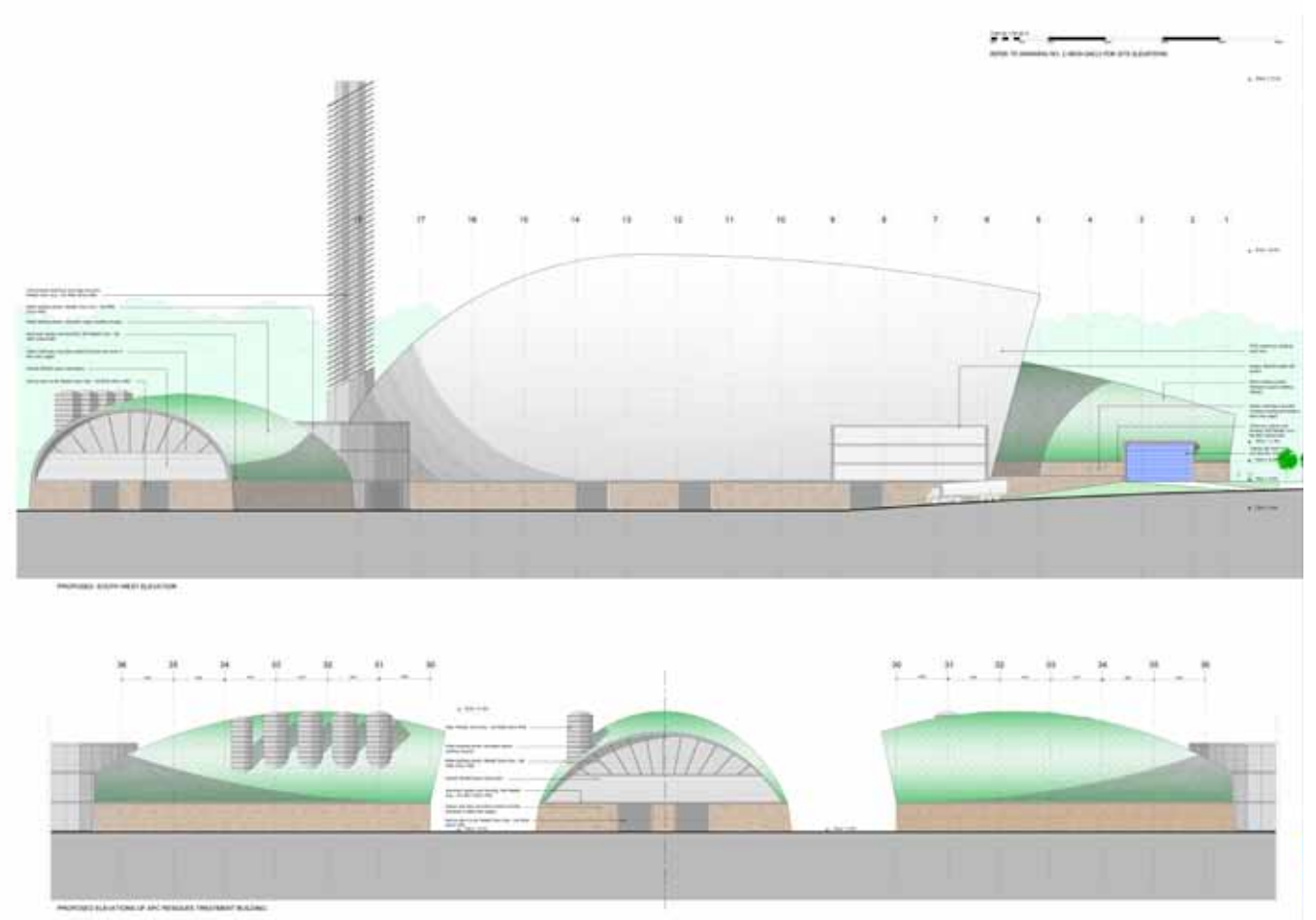
Key Facts

Chieveley Energy from Waste

The annotated site plan and elevation drawings below illustrate the submitted scheme. These clearly show the proposed access route, building and stack heights and building location.

In summary the facility would:

- Handle predominantly residual commercial and industrial (C&I) waste, although the facility will be capable of treating residual municipal waste if required
- Have a capacity to treat 250,000 tonnes of residual waste per year (i.e. waste that cannot be recycled)
- Generate enough electricity to power approximately 30,000 homes
- Have a maximum stack height of 75m, set at 10m below normal ground level as the site has already been worked as a sand pit
- Consist of a main building of 45m, with two smaller pods of 21m
- Keep emissions well within safe Environment Agency guidelines
- Not emit smoke
- Not cause any noise disturbance
- Only be accessed through the Chieveley Motorway services
- Be serviced by 156 lorry movements daily (78 coming in and 78 going out of the site)- mainly confined between the hours of 7am and 7pm, Monday to Friday and between 7am and 1pm Saturday.



By Appointment to
Her Majesty The Queen
Waste Management
Grundon Waste Management Ltd
Colnbrook



www.grundon.com